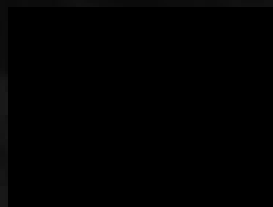


# THE GRILL

**MIDPLAZA II - LG Floor**

Jl. Jend Sudirman Kav. 10-11, Jakarta 10220  
Telp. (021) 570 6210





THE  
GRILL

# OLIVE WAGYU

Exceptional marbling, rich flavor, and melt-in-your-mouth texture, sourced from cattle raised on the island of Shodoshima in Japan, where they are fed a diet including olive pulp, resulting in a uniquely buttery taste, and making it one of the rarest and most sought-after beef varieties in the world.

## MENU

### *Olive Wagyu A5 Sirloin*

100gram	IDR1.400 <sup>++</sup>
200gram	IDR2.700 <sup>++</sup>
300gram	IDR4.000 <sup>++</sup>

### *Olive Wagyu A5 Rib Eye*

300gram	IDR3.950 <sup>++</sup>
---------	------------------------

### *Too Wagyu Steak Tan*

Superior thick wagyu tongue steak cut | 110gram

IDR525 <sup>++</sup>
----------------------







1. KUROGE

2. KOBE

3. AUSTRALIAN WAGYU

in picture: KOBE MORIAWASE

**THE GRILL**

**WAGYU BEEF SELECTION**

**ASSORTMENT**

*Kobe Moriawase* ..... **5.600.000**

KOBE (Sirloin Lip On A5 300gr), KUROGE (Rib Eye Lip On A5 300gr), AUST. WAGYU (Striploin MB 9+ 200gr).

*Wagyu Moriawase* ..... **2.850.000**

KOBE (Sirloin Lip On A5 150gr), KUROGE (Rib Eye Lip On A5 150 gr), AUST. WAGYU (Striploin MB 9+ 100gr).

**A LA CARTE**

*Kobe* (300gram) ..... **2.600.000**

Superior Sirloin Lip On A5

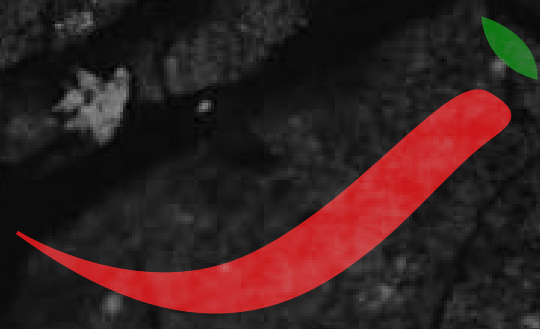
*Kuroge* (300gram) ..... **2.550.000**

Superior Rib Eye Lip On A5

*Japanese Wagyu* (150gram) ..... **1.350.000**

Superior Sirloin Lip On A5

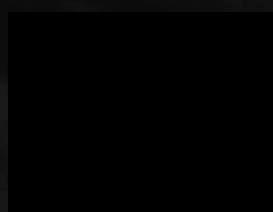




# THE GRILL

DINNER MENU

a la carte



## 特選焼肉

### THE GRILL

*There is a taste choice of spicy or extremely spicy. Available also special mix salty sauce.*

#### サーロイン



*Sirloin Beef*

**WAGYU AUSTRALIAN SIRLOIN BEEF** ..... **Rp. 964.000,-**

#### 上カルビ



*Jou karubi*

**US WAGYU JOU KARUBI** ..... **Rp. 454.000,-**

*US wagyu beef belly*

**JOU KARUBI - US -** ..... **Rp. 365.000,-**

*US Superior beef belly*

#### タン盛り合わせ



**TONGUE MORLAWASE** ..... **Rp. 468.000,-**

*Superior tender tongue steak, tongue span kled with salt & Welsb leek*

#### 上ロース



**U.S WAGYU JOU ROSU** ..... **Rp. 458.000,-**

#### 上ロース

**JOU RO-SU** ..... **Rp. 270.000,-**

*Special sirloin*

#### 上・タンステーキ

**JOU TAN STEAK** ..... **Rp. 326.000,-**

*Superior tender tounge steak*

#### ステーキタン塩

**STEAK TAN SHIO** ..... **Rp. 240.000,-**

*Thick slice of tender tounge*

#### 上塩タン

**JOUSHIOTAN** ..... **Rp. 230.000,-**

*Tongue span kled with salt*

#### タンたれ



**TONGUE TARE** ..... **Rp. 200.000,-**

*Tongue span kled with sweet sauce*

#### 上ミノ

**JOU MINO** ..... **Rp. 148.000,-**

#### 骨付きカルビ

**HONETSUKI KARUBI** ..... **Rp. 328.000,-**

*Beef spare ribs*

## 上葱タン



Jou negitan

## 葱カルビ

## 葱ロース

## カルビ



Karubi

## つぼ浸けカルビ



Tsubo tsuke karubi

## ロース

## ハラミ

## ホルモン

**JOU NEGITAN** ..... **Rp. 260.000,-**  
*Tongue with welsh leek*

**NEGI KARUBI** ..... **Rp. 200.000,-**  
*Beef belly with welsh leek*

**NEGI RO-SU** ..... **Rp. 210.000,-**  
*Sirloin with leek*

**KARUBI** ..... **Rp. 280.000,-**  
*Beef belly*

**TSUBO TSUKE KARUBI** ..... **Rp. 225.000,-**  
*Preserved Karubi*

**RO-SU** ..... **Rp. 195.000,-**  
*Sirloin*

**HARAMI** ..... **Rp. 142.000,-**  
*Hanging tender beef*

**HORUMON** ..... **Rp. 112.000,-**  
*Large intestine*

## 特選焼肉 THE GRILL

## 牛レバー



Gyureba

## 鶏モモ

## 鶏手羽



Chicken wings

## 野菜焼き



Yasaiyaki

**GYUREBA** ..... **Rp. 68.000,-**  
*Beef liver*

**TORIMOMO** ..... **Rp. 116.000,-**  
*Chicken thigh*

**TORI TEBA** ..... **Rp. 68.000,-**  
*Chicken wings*

**YASAIYAKI** ..... **Rp. 62.000,-**  
*Assorted vegetables*



## キノコ盛り



Kinoko mori

**KINOKO MORI** ..... **Rp. 62.000,-**  
*Assorted mushrooms*

## 海鮮焼き

### S E A F O O D G R I L L

## 海鮮盛り合わせ

**KAISEN MORIAWASE** ..... **Rp. 382.000,-**  
*Abalone, prawn, squid, scallop*

## アワビ

**AWABI** ..... **Rp. 735.000,-**  
*Abalone*

## 特選ホタテ貝 (殻付き)



Tokusen hotate

**TOKUSEN HOTATE** ..... **Rp. 502.000,-**  
*Superfine scallop*

## ホタテ貝

**HOTATE** ..... **Rp. 310.000,-**  
*Scallop*

## 大エビ



OO Ebi

**OO EBI** ..... **Rp. 228.000,-**  
*Big prawn, Australia tiger*

## しろエビ



Shiro ebi

**SHIRO EBI** ..... **Rp. 152.000,-**  
*White prawn*

## エビ

**EBI** ..... **Rp. 162.000,-**  
*Prawn*

## イカ

**IKA** ..... **Rp. 70.000,-**  
*Squid*

## イカゲソ

**IKAGESO** ..... **Rp. 42.000,-**  
*Squid legs*

## 大アサリ



OO Asari

**OO ASARI** ..... **Rp. 122.000,-**  
*Big asari clam*

## 漬物

### THE SPICY PICKLES

---

#### キムチ



Kimchi

**KIMCHI** ..... **Rp. 35.000,-**  
*Chinese cabbage*

#### カクテキ



Kakuteki

**KAKUTEKI** ..... **Rp. 35.000,-**  
*Radish*

#### オイキムチ



Oikimchi

**OIKIMCHI** ..... **Rp. 35.000,-**  
*Cucumber*

#### キムチ盛り

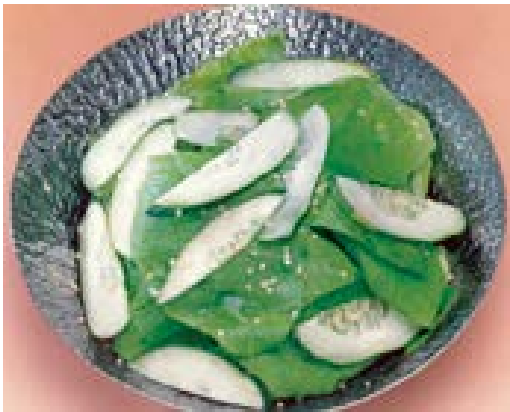
**KIMCHI MORI** ..... **Rp. 66.000,-**  
*Assorted Korean pickles*

## サラダ

### SALAD

---

#### 特選サラダ



Tokusen salad

**TOKUSEN SALAD** ..... **Rp. 69.000,-**  
*Lettuce, cucumber with sesame dressing*

#### 特選レタス



Tokusen lettuce

**TOKUSEN LETTUCE** ..... **Rp. 56.000,-**  
*Lettuce with sesame dressing*



## わかめサラダ



Wakame salad

**WAKAME SALAD** ..... **Rp. 67.000,-**  
*Seaweed, lettuce with sour dressing*

## わかめレタス

**WAKAME LETTUCE** ..... **Rp. 60.000,-**  
*Lettuce, seaweed with spicy dressing*

## サンチュ



Sanchu

**SANCHU** ..... **Rp. 68.000,-**  
*Chinese lettuce*

## 一品料理

### A L A C A R T E

---

## ジャコ豆腐



Jako tofu

**JAKO TOFU** ..... **Rp. 72.000,-**  
*Cold beancurd stuffed with small fish with special home made sauce*

## チャプチェ



Chapucche

**CHAPUCHE** ..... **Rp. 89.000,-**  
*Sauteed glass noodle with vegetables*

## 焼き海苔

**YAKI NORI** ..... **Rp. 42.000,-**  
*Grilled dried laver seaweed*

## 味付け海苔



Ajitsuke nori

**AJITSUKE NORI** ..... **Rp. 46.000,-**  
*Spicy seaweed*

## ナムル



Namuru

**NAMURU** ..... **Rp. 66.000,-**  
*Assorted cold boiled vegetables*



## ユッケ



**YUKKE** ..... **Rp. 182.000,-**  
*Thin sliced raw beef with egg yolk*

## 塩ユッケ

**SHIO YUKKE** ..... **Rp. 182.000,-**  
*Salted raw beef with egg yolk*

## チヂミ

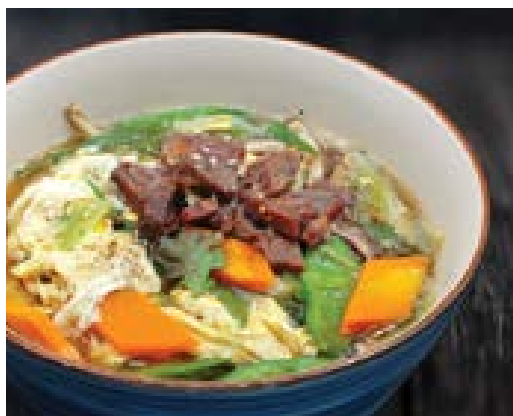
**CHIJIMI** ..... **Rp. 98.000,-**  
*Pancake mixed with seafood vegetables*

## お食事

### M I X E D R I C E D I S H

---

## クッパ



**KUPPAP** ..... **Rp. 68.000,-**  
*Meat, egg and vegetable in rice soup*

## カルビクッパ

**KARUBI KUPPAP** ..... **Rp. 92.000,-**  
*Beef belly in spicy rice soup*

## テグタンクッパ

**TEGUTAN KUPPAP** ..... **Rp. 90.000,-**  
*Meat and vegetable in spicy rice soup*

## お食事

### M I X E D R I C E D I S H

---

## ユッケジャンクッパ

**YUKKEJAN KUPPAP** ..... **Rp. 126.000,-**  
*Ox-tail meat and vegetable in spicy rice soup*

## タルケジャンクッパ

**TARUKEJAN KUPPAP** ..... **Rp. 94.000,-**  
*Chicken and vegetable in spicy soup*

## コムタンクッパ



**KOMTAN KUPPAP** ..... **Rp. 92.000,-**  
*Radish in ox-tail rice soup*

## ビビンバ



**BIBIMPAP** ..... **Rp. 88.000,-**  
*Various kinds of vegetables, beef on top of rice*



## ユッケビビンバ



Yukke bibimpap

**YUKKE BIBIMPAP** ..... Rp. 128.000,-  
*Various kinds of vegetables, egg, sliced raw meat on top of rice*

## 石焼ビビンバ



Ishiyaki bibimpap

**ISHIYAKI BIBIMPAP** ..... Rp. 136.000,-  
*Bibimpap in Korean stone ware*

## 石焼シーフードビビンバ



Ishiyaki seafood bibimpap

**ISHIYAKI SEAFOOD BIBIMPAP** ..... Rp. 126.000,-  
*Seafood bibimpap in Korean stone ware*

## キムチチャーハン

**KIMCHI CHA-HAN** ..... Rp. 104.000,-  
*Korean fried rice*

## ガーリックチャーハン

**GARLIC CHA-HAN** ..... Rp. 104.000,-  
*Garlic fried rice*

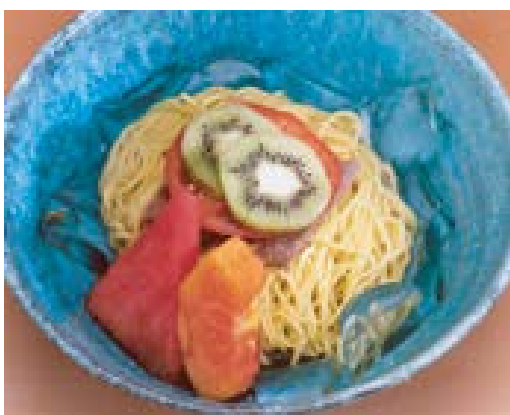
## 御飯

**GOHAN** ..... Rp. 28.000,-  
*Japanese white rice*

## 麺類

### N O O D L E S

## 冷麺



Renmyon

**RENMYON** ..... Rp. 102.000,-  
*Plain Korean cold noodle*

## 温麺

**ONMYON** ..... Rp. 78.000,-  
*Plain Korean hot noodle*

## ビビン麺

**BIBIMMYON** ..... Rp. 102.000,-  
*Korean cold spicy noodle with various topping*

## テグタン麺

**TEGUTANMYON** ..... Rp. 90.000,-  
*Beef and hot noodle with vegetable soup*

## ユッケジャン麺

**YUKKEJANMYON** ..... Rp. 128.000,-  
*Ox-tail and hot noodle with vegetable soup*

## カルビ麺

**KARUBIMYON** ..... Rp. 92.000,-  
*Hot noodle with beef belly soup*

## コムタン麺

**KOMTANMYON** ..... Rp. 98.000,-  
*Hot noodle with ox-tail soup*



# スープ S O U P

---

## 玉子スープ



Tamago soup

**TAMAGO SOUP** ..... **Rp. 36.000,-**  
*Egg soup*

## わかめスープ



Wakame soup

**WAKAME SOUP** ..... **Rp. 38.000,-**  
*Seaweed soup*

## 野菜スープ

**VEGETABLE SOUP** ..... **Rp. 36.000,-**  
*Vegetables soup*

## カルビスープ

**KARUBI SOUP** ..... **Rp. 88.000,-**  
*Beef belly soup*

## テグタンスープ

**TEGUTAN SOUP** ..... **Rp. 86.000,-**  
*Spicy beef and vegetable soup. Light flavored*

## ユッケジャンスープ



Yukkejan soup

**YUKKEJAN SOUP** ..... **Rp. 120.000,-**  
*Spicy ox-tail and vegetable soup. Rich in flavor*

## タルケジャンスープ

**TARUKEJAN SOUP** ..... **Rp. 98.000,-**  
*Spicy chicken and vegetable soup*

## コムタンスープ



Komtan soup

**KOMTAN SOUP** ..... **Rp. 82.000,-**  
*Ox-tail soup*



海鮮チゲ

**HEMITAN** ..... **Rp. 122.000,-**  
*Korean seafood hot pot soup*

石焼豆腐チゲ



*Ishiyaki tofu chige*

**ISHIYAKI TOFU CHIGE** ..... **Rp. 128.000,-**  
*Tofu stew in Korean stone ware*

豆腐チゲシーフード



**TOFU CHIGE SEAFOOD** ..... **Rp. 188.000,-**  
*Big prawn, asari clam white prawn & tofu*

ビーフ  
ケジャンスープ

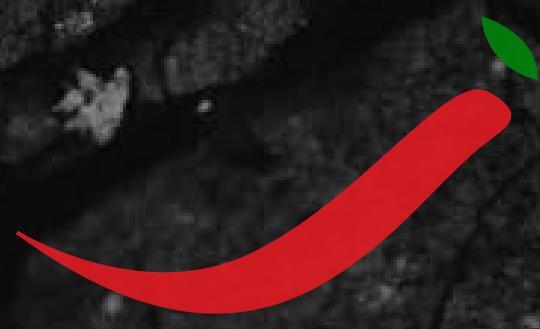
**BEEF KEJAN SOUP** ..... **Rp. 120.000,-**  
*Spicy beef and vegetable mushroom on Korean hot stone*

アサリスープ



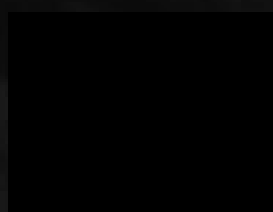
**ASARI SOUP**..... **Rp. 148.000,-**  
*Big asari clam soup*





# THE GRILL

LUNCH MENU  
SET





THE  
GRILL

# SPECIAL *Beef Tongue*



*Gyutan Donburi*

Include: Soup & Salad  
Rp 108.000++

*Spicy Gyutan*

Include: Rice, Soup & Salad  
Rp 102.000++



*Spicy Gyutan Donburi*

Include: Soup & Salad  
Rp 108.000++



All prices are subject to 21% service charge & government tax



# Special Lunch Set

MONDAY - FRIDAY

SERVED WITH KOREAN SIDE DISH, KIMCHI, COFFEE & ICE CREAM



Rp.  
**246**  
.000,-

## YAKINIKU

Assortment of rosu, boneless strip and beef tongue in homemade yakiniku sauce  
**Include** : rice, soup & salad



Rp.  
**198**  
.000,-

## SPECIAL YAKINIKU

US hanging tender marinated in homemade yakiniku Sauce  
**Include** : rice, soup & salad



Rp.  
**180**  
.000,-

## ROSU

Beef choice boneless strip  
**Include** : rice, soup & salad



Rp.  
**204**  
.000,-

## KARUBI

Beef short ribs set  
**Include** : rice, soup & salad

All prices are subject to 21% service charge & government tax





Rp.  
**142**  
.000,-

### ISHIYAKI BIBIMBAP

Korean bibimbap with raw egg in stone pot  
**Include** : soup & salad



Rp.  
**136**  
.000,-

### TOFU JJIGAE

Soft tofu stew in stone pot  
**Include** : rice & salad



Rp.  
**122**  
.000,-

### KARUBI MYON

Beef short rib soup with Korean noodle  
**Include** : salad



Rp.  
**124**  
.000,-

### YUKGAEJANG MYON

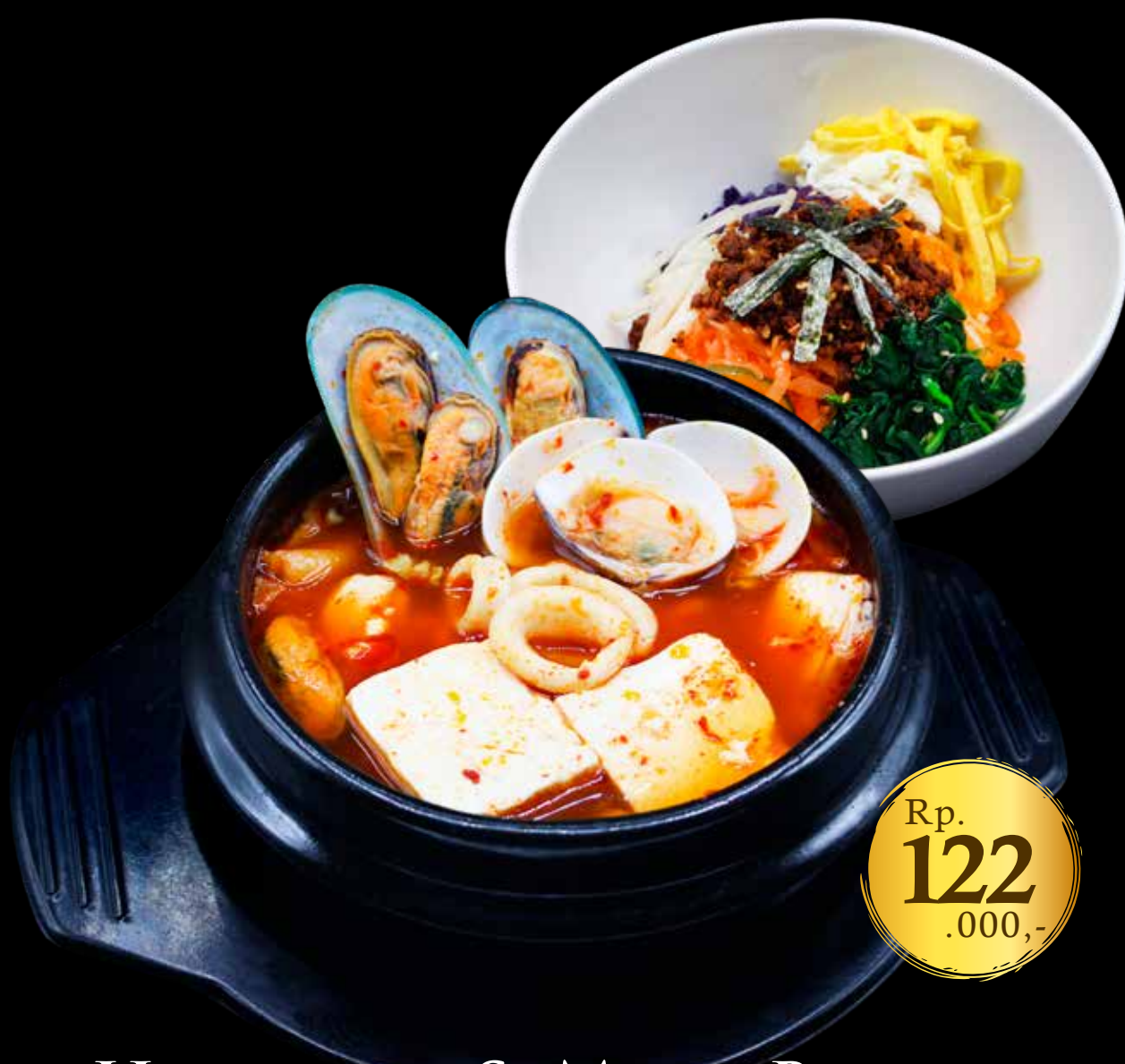
Spicy beef oxtail & vegetables soup with Korean noodle  
**Include** : salad

### KARUBI KUPPA

Beef short rib soup with rice  
**Include** : salad

### YUKGAEJANG KUPPA

Spicy beef oxtail & vegetables soup with rice  
**Include** : salad



Rp.  
**122**  
.000,-

### HEMITAN & MINI BIBIMBAP

Korean seafood hot-pot & bibimbap  
**Include** : salad



Rp.  
**136**  
.000,-

### YAKINIKU DONBURI

Beef yakiniku on top of rice  
**Include** : soup & salad





Rp.  
**100**  
.000,-

**SALAD BIBIMBAP**

Assorted vegetables & meat  
on top of rice  
**Include** : soup



Rp.  
**100**  
.000,-

**BIBIMBAP**

Assorted vegetables, meat & egg  
mixed with rice  
**Include** : salad



Rp.  
**106**  
.000,-

**KOREAN HAMBURG STEAK**

Beef hamburg patty with Korean  
kimchi & mayo  
**Include** : rice, soup & salad



Rp.  
**102**  
.000,-

**KIMCHI CHA-HAN**

Korean kimchi flavored fried rice  
**Include** : rice, soup & salad



Rp.  
**102**  
.000,-

**YAKI KIMCHI RAMYON**

Korean kimchi fried noodle  
**Include** : soup & salad



\*For A La Carte Menu Order,  
Add Extra **IDR 60.000** For  
Complete Set Menu (Lunch Only)



**THE  
GRILL**

B E V E R A G E S



# The Grill Original Drinks



## BERRY BERRY

raspberry,  
blueberry,  
cranberry

70

## MATCHA SHAKE

green tea powder,  
milk, vanilla  
ice cream

58

## CARAMEL COFFEE

52

## MONKEY PUNCH

banana,  
pineapple,  
papaya

50



## BB MIX YOGURT

strawberry,  
banana yoghurt,  
milk

58

## MILKY WAY

strawberry,  
banana,  
milk

58

## BANANA MOCHA

banana, coffee,  
milk, vanilla  
ice cream

52

## RASPBERRY SMOOTHIE

raspberry & milk  
blended with ice

58

All prices are subject to 21% service charge & government tax  
The prices mentioned in Rp 1.000,-



## Yogurt Juice

**1. BANANA, ORANGE & YOGHURT**

The Grill special mix of banana, orange and yoghurt

**55**

**2. MELON & YOGHURT**

**50**

## Fresh Juice



**ORANGE JUICE**

orange & ice

**58**



**STRAWBERRY JUICE**

strawberry & ice

**55**



**MELON JUICE**

melon & ice

**52**



**WATERMELON JUICE**

watermelon & ice

**50**

**1. GUAVA JUICE** ..... **50**  
guava and ice

**2. MANGO JUICE** ..... **52**  
mango and ice

**LEMON JUICE** ..... **38**  
lemon and ice

**MIXED JUICE** ..... **60**  
mix fruits and ice





## *Soft Drink*

COCA COLA	35
DIET COKE	35
SPRITE	35
SODA WATER	35
EQUIL NATURAL MINERAL (380 ml)	40
EQUIL NATURAL SPARKLING (380 ml)	45
TONIC WATER	40

## *Squash*



**YUZU  
SQUASH**  
Japanese citrus,  
soda

52



**LEMON  
SQUASH**  
lemon syrup,  
soda & ice

52



**ORANGE  
SQUASH**  
orange syrup,  
soda & ice

58



**LYCHEE  
SQUASH**  
lychee syrup,  
soda & ice

55



# Tea



LEMON TEA  
50



LYCHEE TEA  
55



YUZU TEA  
Japanese  
Citrus  
50



PEACH TEA  
35



1. CHAMOMILE TEA  
35

2. LEMON GINGER TEA  
35

GREEN TEA (Hot or Cold) / POT .....	65
TEA (Hot or Cold) .....	32
JAVA TEA .....	15
GINGER TEA .....	35





# Coffee



ESPRESSO .....	35
① LATTE (Hot or Ice) .....	50
LATTE CARAMEL (Hot or Ice) .....	53
CAPPUCCINO (Hot or Ice) .....	53
AMERICANO (Hot or Ice) .....	38

# Dessert



TIRAMISU  
coffee flavoured  
57



OGURA  
red bean  
55



MATCHA  
green tea  
57

VANILLA .....	57
CHOCOLATE .....	57

STRAWBERRY .....	57
MIX FRUITS .....	175



---

TO FORGET, WE DRINK  
TO CELEBRATE,  
WE DRINK AGAIN...

---





# Alcohol

## Cocktail



STRAWBERRY  
MARGARITA

frozen

120



MARGARITA

110



SCREW  
DRIVER

110



MOJITO

110



LONG  
ISLAND

120

## Sochu Cocktail

1 LEMON COCKTAIL ..... 135

2 PEACH COCKTAIL ..... 135



## Whiskey Cocktail



CHIVAS  
HIGHBALL

226



BATAVIA  
HIGHBALL

95



CHIVAS  
WHISKEY

3.500





## *Korean Soju*



1. CHUM CHURUM 360ml  
250
2. JINRO 360ml  
250
3. JINRO GRAPEFRUIT 360ml  
250
4. JINRO GREEN GRAPE  
360ml  
250

## *Beer*

BINTANG PITCHER

320

BINTANG 300ml

68

SAPPORO 300ml

120

SAPPORO 500ml

170





## Sake 日本酒



OZEKI NAMACHOZO SHU

Hyogo

300ml / 500

LIGHT & SWEET



HAKUTSURU JOSEN NAMACHOZO

Hyogo

300ml / 450

RICH & DRY



HAKUSHIKA YAMADA NISHIKI

Hyogo

300ml / 450

MEDIUM

## Shochu 焼酎



NIKAIDO - MUGI SOCHU

Oita

900ml / 1.800

MEDIUM LIGHT



OOKUCHI - KURO ISANISHIKI

Kagoshima

900ml / 1.700

MEDIUM



SATSUMA SHIRANAMI  
KUROJIKOMI

Kagoshima

900ml / 1.500

MEDIUM



SHOCHU BY GLASS

Mizuwari (served with ice and water)

Oyuwari (mixed with hot water)

On the Rock

130



# Sake 日本酒



GEKKEIKAN JUNMAI KARAKUCHI 1.8 Liter / **2.100**

Kyoto

**DRY**



OZEKI JUNMAI KINKAN 1.8 Liter / **2.100**

Hyogo

**DRY**



KUBOTA SENJU TOKUBETSU HONJOZO 720ml / **1.100**

Niigata

**LIGHT & DRY**



MASUMI HON-JOZO TOKUSEN 720ml / **1.100**

Nagano

300ml / **450**

**MEDIUM DRY**



GEKKEIKAN TRADITIONAL HONJOZO 720ml / **900**

USA

**MEDIUM**



ICHIDAI SAKURA MISEN 720ml / **1.300**

Hiroshima

**LIGHT**



DASSAI 45 JUNMAI DAIGINJO 720ml / **1.850**

Yamaguchi

**LIGHT & SWEET**



KEIRYU NAMACHOZO 720ml / **1.100**



# Wine



1.	DE BORTOLI DB FAMILY SELECTION SHIRAZ <i>Aust.</i>	900
2.	DB FAMILY SHIRAZ CABERNET <i>Aust.</i>	900
3.	TWO ISLAND SHIRAZ <i>Aust.</i>	650
4.	TWO ISLAND CABERNET MERLOT <i>Aust.</i>	650
5.	RICHLAND MERLOT <i>Aust.</i>	800
6.	RICHLAND SHIRAZ <i>Aust.</i>	800



7.	JOHNNY Q CABERNET SAUVIGNON <i>Aust.</i>	1.050
8.	JOHNNY Q SHIRAZ <i>Aust.</i>	1.050
9.	BIN 128 COONAWARRA <i>Aust.</i>	3.100
10.	BIN 389 SHIRAZ CABERNET <i>Aust.</i>	6.000
11.	KOONUNGA HILL SHIRAZ CABERNET <i>Aust.</i>	1.250
12.	DE LA CHAPELLE MERLOT <i>France</i>	1.050
13.	DE LA CHAPELLE CABERNET SAUVIGNON <i>France</i>	1.050



# Wine



- 14. BIN 150 SHIRAZ *Aust.* ..... 5.600
- 15. CONCHA Y TORO MARQUES CABERNET SAUV. *Chile* ..... 2.300
- 16. SANTA RITA CABERNET SAUVIGNON *Chile* ..... 900
- 17. SANTA RITA MERLOT *Chile* ..... 900
- 18. ASHBROOK CABERNET MERLOT *Aust.* ..... 1.700



- 19. TWO ISLAND CHARDONNAY *Aust.* ..... 650
- 20. TWO ISLAND RIESLING *Aust.* ..... 650
- 21. TRIVENTO MIXTUS CABERNET MERLOT *Argentina* ..... 900
- 22. TRIVENTO MIXTUS SHIRAZ MALBEC *Argentina* ..... 900
- 23. M CHAPOUTIER BELLERUCHE COTE DU RHONE ROUGE ..... 1.200  
*France*



